

Installation Manual Unimi-1baseHPC



Top of a Unimi-1baseHPC foundation attached with an adaptor for a Tritium 150 kW rapid charger

Introduction:

Unimi-1baseHPC is intended for installation of larger rapid charging stations.

By attaching an adaptor element at the top, each Unimi-1baseHPC can accommodate a wide variety of different chargers.

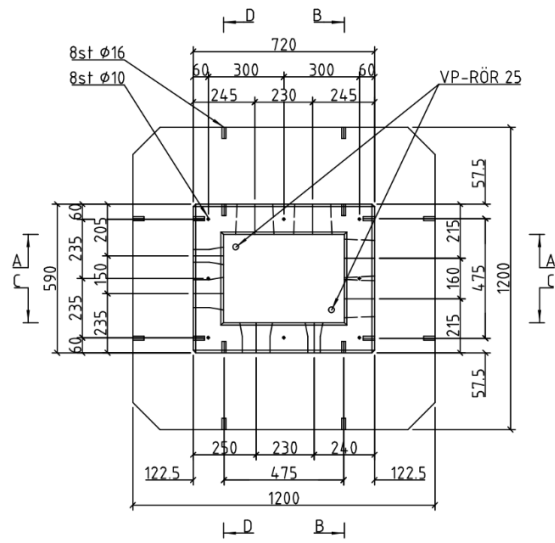
The upward face and cable inlet of the adaptor element may look different from time to time depending on station model however the outer rectangular size and attachment pattern towards the Unimi-1baseHPC is always the same.

Local building codes and regulations always supersede these guidelines and it will be the responsibility of the installer to install the Unimi-1baseHPC in such a manner that they are not in conflict.

Unimi	<i>Kap</i> -	<i>Kostnb.</i> K00717	<i>Dok namn</i> Produktbeskrivning			
<i>Mallens filnamn</i> Produktbeskrivning.doc	<i>Dok dat</i> -	<i>Aktuellt filnamn</i> Produktbeskrivning – Unimi-1baseHPC	<i>Gäller fr o m</i> 2020-06-08	<i>Rev</i> 02	<i>Godkänd</i> 2014Draft01-	<i>Sid</i> -

Unimi-1baseHPC dimensions:

- Length (at the base) 1200 mm
- Depth (at the base) 1200 mm
- Length (at the top) 720 mm
- Depth (at the top) 590 mm
- Height 775mm
- Weight 1270 kg



Measurements top view

Installation procedure:

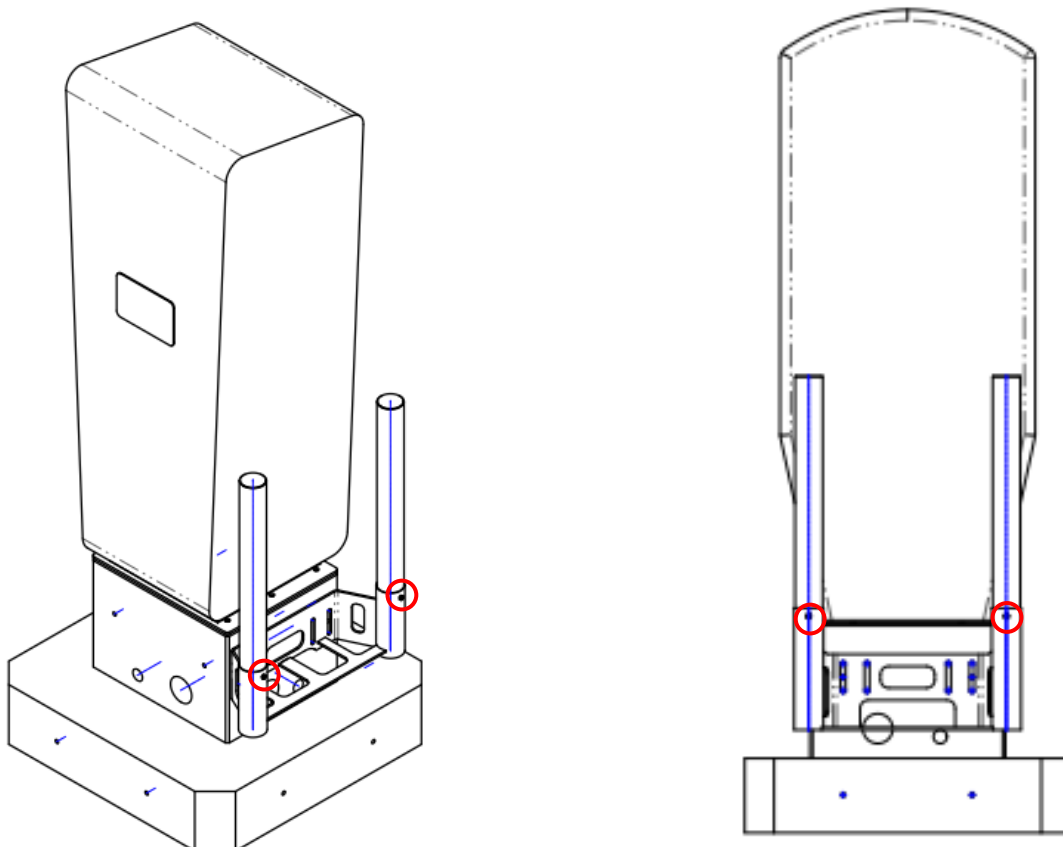
1. To off-load the Unimi-1baseHPC either use fork-lift for the EUR pallet on which the foundation is loaded or use a lift sling attached to the two lifting anchors positioned at either long side of the foundation.
2. The cavity where the Unimi-1baseHPC shall be installed should be large and deep enough so that the underlying ground can be prepared in such a way that water will drain away from underneath the station. Ideally, draining layer of gravel should penetrate below ground frost level of where the installation site is situated. The cavity should allow work with ground stomp machine both below and at the sides of the foundation. The local conditions and machinery used by the installer will be the determining factor for the size of the cavity. As a minimum we recommend 300 mm wider on each side than the foot of the base (1800x1800 mm).
3. The intention is to have the top of the Unimi-1baseHPC foundation flush with surrounding ground level (excluding the adaptor element that will add 10 mm at the top after installation). Depending on local conditions such as water drainage it may be required that the foundation top protrudes from final ground surface. This should not exceed 100 mm if integrated Unimi-1baseHPC crash protections will be installed on the foundation.
4. If possible, with regards to the above, we recommend that 200 mm in each direction from the foundation top shall be flush. Although not a necessity, this will make future swap of adaptors to other station brands easier as those adaptors may have to be off set from foundation center
5. When installing the Unimi-1baseHPC pay close attention to the orientation of the foundation so that it is aligned with the station design and intended facing towards charging vehicles and users
6. The Unimi-1baseHPC has 1x112 mm conduit inlet and 1x51 mm conduit inlet in each direction. Unused conduit openings will be covered with plastic lids
 - a. From June 2020 there will be a pan European version of Unimi-1baseHPC that will have 2x142 mm conduit openings on one of the short sides and on one of the long sides. This to better align with the standards used in different regions of Europe
7. If necessary, plastic attachment adaptors may be used between the foundation conduit inlet holes and the plastic conduits. Installation expansion foam may also be used. (None of these supplied with foundation)

Unimi	Kap	Kostnb. K00717	Dok namn Produktbeskrivning				
Mallens filnamn Produktbeskrivning.doc	Dok dat	Aktuellt filnamn Produktbeskrivning – Unimi-1baseHPC	Gäller fr o m 2020-06-08	Rev 02	Godkänd 2014Draft01-	Sid	



Different stages of installation. Rightmost picture showing a Tritium charger installed using an adaptor between the foundation top and base of charging station.

8. If integrated protection bollards shall be installed they can be attached on all sides of the Unimi-1baseHPC via the 2xM16 concrete anchors. The protection bollards can be adjusted up and down alongside the foundation wall. Note that the attaching screws of the cylinders shall be just above ground surface to allow easy switch of damaged poles.



Note: The encircled attachment screws of the protection bollards should be positioned above final ground level

Further questions can be answered at info@unimi.se or by calling +46 734 43 5245

Unimi	Kap	Kostnb. K00717	Dok namn Produktbeskrivning			
Mallens filnamn Produktbeskrivning.doc	Dok dat	Aktuellt filnamn Produktbeskrivning – Unimi-1baseHPC	Gäller fr o m 2020-06-08	Rev 02	Godkänd 2014Draft01-	Sid

Unimi	<i>Kap</i> -	<i>Kostnb.</i> K00717	<i>Dok namn</i> Produktbeskrivning			
<i>Malens filnamn</i> Produktbeskrivning.doc	<i>Dok dat</i> -	<i>Aktuellt filnamn</i> Produktbeskrivning – Unimi-1baseHPC	<i>Gäller fr o m</i> 2020-06-08	<i>Rev</i> 02	<i>Godkänd</i> 2014Draft01-	<i>Sid</i>

Unimi	<i>Kap</i> -	<i>Kostnb.</i> K00717	<i>Dok namn</i> Produktbeskrivning				
<i>Malens filnamn</i> Produktbeskrivning.doc	<i>Dok dat</i> -	<i>Aktuellt filnamn</i> Produktbeskrivning – Unimi-1baseHPC		<i>Gäller fr o m</i> 2020-06-08	<i>Rev</i> 02	<i>Godkänd</i> 2014Draft01-	<i>Sid</i>